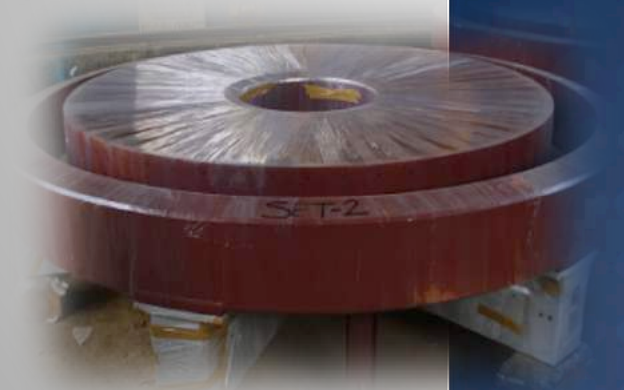




METALFAB HIGHTECH PVT. LTD.



AGENDA

Introduction

Products & Segments

Manufacturing Units & Facilities

Organization & Quality

Key Contacts

METALFAB at a glance...

- *An ISO 9001, ISO 14001 and OHSAS 18001 Certified Engineering Company engaged in Heavy Fabrication in the following segments*
 - *Windmill Towers*
 - *Equipment*
 - *Heavy Industrial Structures for all the Core Sectors*
- Annual Production Capacity: 30,000 MT
- Established in 1981
- Employees: 800

EXECUTIVE SUMMARY

- Technically-Proficient Team backed with a Highly-Motivated and Skilled workforce
- Over 30 Years of Experience in Fabrication
- Well-equipped with Material Preparation, Forming, Welding, Machining, Material Handling and Surface Preparation Facilities
- ISO Certified Processes and NABL-Approved Testing Lab

CLIENTS

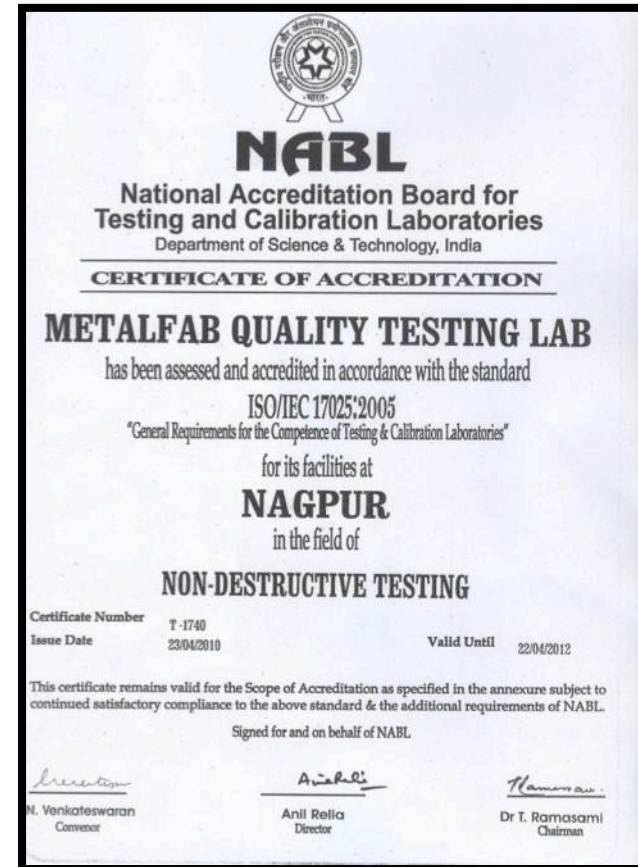
WINDMILL TOWERS

- Wind World India Ltd. (Earlier known as Enercon)
- Kenersys India Pvt. Ltd.
- Regen Powertech Pvt. Ltd.
- Inox Wind Ltd.

THERMAL POWER, SUGAR & OTHER CORE SECTORS

- Bharat Heavy Electricals Ltd.
- Larsen & Toubro Ltd.
- Doosan Power Systems India Pvt. Ltd.
- ThyssenKrupp (I) Pvt. Ltd.
- Thermax Ltd.
- ISGEC Heavy Engineering Ltd.
- Siemens Ltd.
- John Zink Hamworthy Combustion, Luxembourg
- Larsen & Toubro MHPS Boilers Pvt. Ltd.

CERTIFICATIONS AND ACCREDITATIONS



CERTIFICATIONS



KVQA *Certificate of Registration*
(Environmental Management System)
KVQA CERTIFICATION SERVICES PVT. LTD.

This is to certify that the Environmental Management System of
METALFAB HIGHTECH PVT. LTD
Regd. Office & Unit-1: E-21-25, 33B/2, M.L.D.C. Industrial Area
Hingna Road, Nagpur - 440 028, Maharashtra, India
Unit-2: L-2, M.L.D.C. Industrial Area, Hingna Road
Nagpur - 440 016, Maharashtra, India

Has been found to be of the Environmental Management System Standard
AS/NZS ISO 14001:2015/ISO 14001:2015

This certificate is valid for the following product or service range
Manufacture and Supply of Tubular Steel Wind Turbine Towers,
Wind Operated Generator Parts; Technological Structures and related
Fabricated Equipment for core sectors- Wind & Thermal Energy,
Railway, Steel and Cement Industries

1st Surveillance Due On: 07/08/2018; Done On:
2nd Surveillance Due On: 07/08/2019; Done On:

Certificate No: **IESC201709001**
Date Of Issue: 07, September, 2017
Valid Until: 06, September, 2020*



Issued by 
Authorised signatory KVQA



JAS-ANZ
MS4009131N
www.jas-anz.org

JAS-ANZ is the government-appointed accreditation body for Australia and New Zealand responsible for providing accreditation of conformity assessment bodies (CABs) in the fields of certification and inspection. Accreditation by JAS-ANZ demonstrates the competence and independence of KVQA,
Accredited by a member of IAF's MLA for Quality Systems
To Check the Status of the Certification kindly log on to www.kvqa.in
F-300, Sector -63, Noida U.P., India. Ph-011-22711940, 22711941, email: delhi@kvqaindia.com
MS4009131N
*Subject to successful completion of surveillance audit



KVQA *Certificate of Registration*
(Occupational Health & Safety Management System)
KVQA CERTIFICATION SERVICES PVT. LTD.

This is to certify that the Occupational Health & Safety Management System of
METALFAB HIGHTECH PVT. LTD
Regd. Office & Unit-1: E-21-25, 33B/2, M.L.D.C. Industrial Area
Hingna Road, Nagpur - 440 028, Maharashtra, India
Unit-2: L-2, M.L.D.C. Industrial Area, Hingna Road
Nagpur - 440 016, Maharashtra, India

Has been found to be of the Occupational Health & Safety Management System Standard
OHSAS 18001:2007

This certificate is valid for the following product or service range
Manufacture and Supply of Tubular Steel Wind Turbine Towers,
Wind Operated Generator Parts; Technological Structures and related
Fabricated Equipment for core sectors- Wind & Thermal Energy,
Railway, Steel and Cement Industries

1st Surveillance Due On: 07/08/2018; Done On:
2nd Surveillance Due On: 07/08/2019; Done On:

Certificate No: **IOSC201709001**
Date Of Issue: 07, September, 2017
Valid Until: 06, September, 2020*

Issued by 
Authorised signatory KVQA



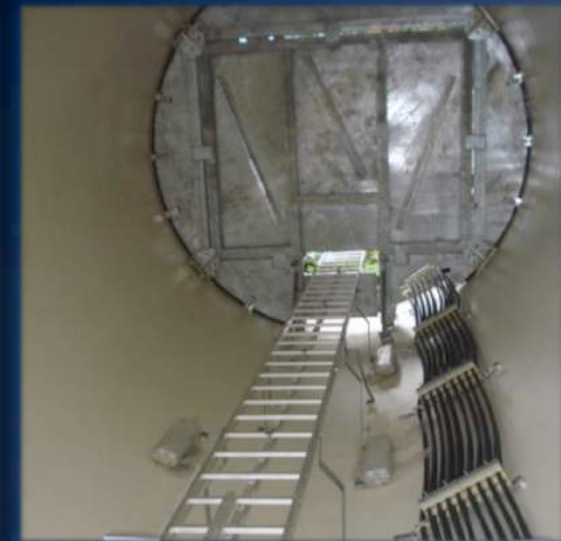
JAS-ANZ
MS4009131N
www.jas-anz.org

JAS-ANZ is the government-appointed accreditation body for Australia and New Zealand responsible for providing accreditation of conformity assessment bodies (CABs) in the fields of certification and inspection. Accreditation by JAS-ANZ demonstrates the competence and independence of KVQA,
Accredited by a member of IAF's MLA for Quality Systems
To Check the Status of the Certification kindly log on to www.kvqa.in
F-300, Sector -63, Noida U.P., India. Ph-011-22711940, 22711941, email: delhi@kvqaindia.com
MS4009131N
*Subject to successful completion of surveillance audit



PRODUCTS

Windmill Towers
Steel parts for Generators
Equipment Fabrication
Structural Fabrication



WINDMILL TOWERS



- Largest Tower Manufacturer in Central/Northern India
- Manufacturing Towers since 2002
- Experience of Over 3000 Towers
- 750 Towers Every year
 - 600 Hybrid Towers
 - 150 Full-Length Steel Towers

WINDMILL TOWERS

Segment

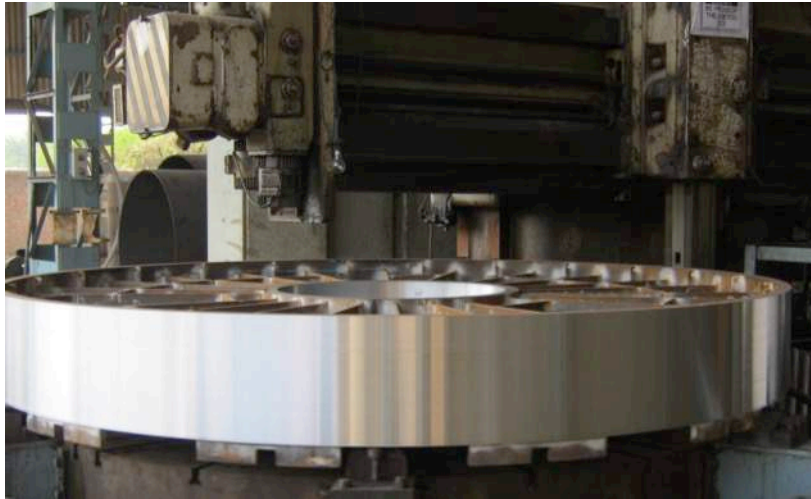
- Length: up to 30m
- Weight: up to 60 MT
- Diameter: up to 4.5m

Tower

- Height: 56m to 92m
- Weight: up to 197 MT
- Thickness: 10mm to 38mm



STEEL PARTS FOR GENERATORS



- Stator Carrier
- Disc Rotor
- Stator Ring



27/12/2010 11:12

- High Precision Fabrication
- Extensive Machining
- Production Capacity of 70+ sets per year

EQUIPMENT

- Chimneys
- Silos
- Pressure Vessels
- Heat Exchangers



- Tanks
- Deaerators
- Furnace Casings
- PP Hanger Rods



SILOS FOR SUPER-CRITICAL THERMAL POWER PLANTS



- Silos Doosan & BHEL Boilers up to 800 MW



- Silos for up to 360 MW for Thermax-Babcock & Wilcox for South America

HANGER RODS FOR PRESSURE PARTS



STACKS & CHIMNEYS

- Flare Stack for John Zink Hamworthy Combustion



- Wind Shield for Siemens

STRUCTURES



- Boiler & ESP Structures:
 - Star Columns
 - Box Columns
 - Built-Up H Columns
 - Beams & Bracings
- Alloy Steel Buckstays
- Railway Bridge Girders
- Ducts & Panels
- Auxiliary and general fabrication like Staircase, Handrail, Platform etc

BUCKSTAYS



STEEL GIRDERS & RAILWAY BRIDGE





MANUFACTURING UNITS AND FACILITIES

UNITS

- Large Scale Fabrication Infrastructure with:
 - In-House Machine shop
 - NABL-Certified Non-Destructive Testing Facilities
 - State-of-the-art Blasting and Painting Line

	Unit 1	Unit 2
Area in sqm:	65,000	25,000
Products:	Towers Equipment	Structures

MACHINERY

CNC Plasma Cutting with Auto Bevel



Rolling Machine



MACHINERY

Submerged Arc Welding Machine



Drilling Machine



MACHINERY

Vertical Boring Machine



Portable Flange Facing Machine



MACHINERY

I-Beam Assembly/
Straightening Machine



Tandem SAW Welding Machine



MACHINERY

3-Axis CNC Drilling Machine



CNC Plate Drilling Machine

FACILITIES

Grit Blasting



Painting Booth



FACILITIES

- Material Handling
 - In-Shop Capacity of 60 MT
 - Movable Capacity of 75 MT



- Surface Preparation

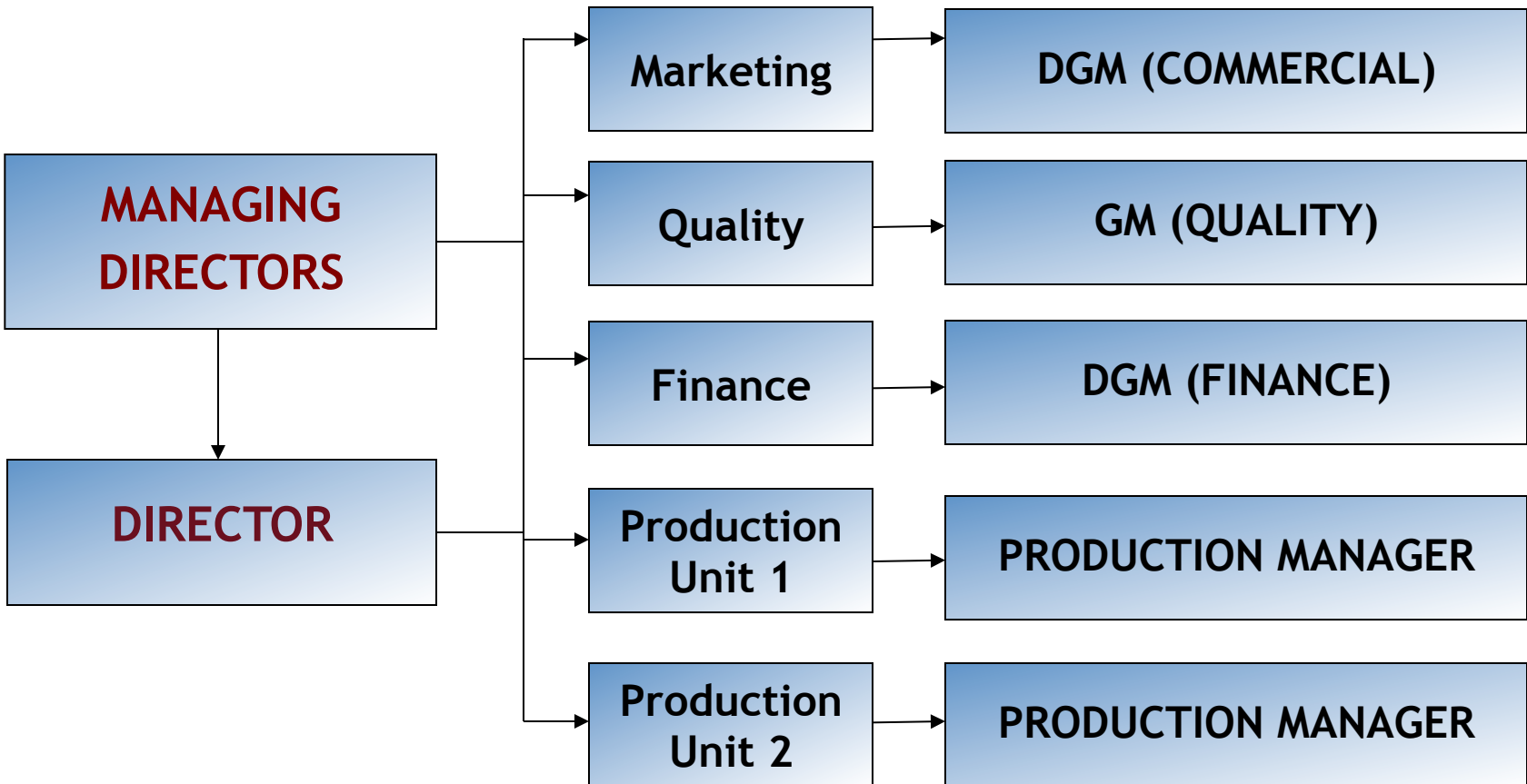
- Multiple Blasting & Painting Booths with a Maximum Capacity of 7m x 7m x 30 m or 5m x 11m x 18 m
- Well equipped with Compressors and Electric, Arc Jet and Airless Spray Guns



ORGANIZATION & QUALITY

Delivering World-Class Products

ORGANIZATION STRUCTURE



QUALITY POLICY

- To produce items of high standard using best quality material to fulfill customer satisfaction
- To update procedures to deliver the goods in time as per specification of the customer
- To update human resources through communication training and participation at all levels
- To achieve productivity through efficiency (do things rightly) and effectiveness (doing right things)
- To use environmentally safe technologies & practices for prevention of pollution and the continual improvement in environment performance
- To eliminate or minimize risk to employees and other parties who may be exposed to Occupational Health and Safety risks associated with the activities of company

IN-HOUSE TESTING FACILITIES

- NABL-Certified Non Destructive Testing Lab at Works:
 - Radiography with IC-2 Camera
 - Ultrasonic Flow Detector type DM - 501
 - Ultrasonic Testing
 - Magnetic Particle Testing
 - Dye Penetrate Testing
 - Hydraulic Testing
 - Pneumatic Testing
 - Vacuum Testing



KEY CONTACTS

KEY CONTACT PERSONNEL

- **Mr. Sandeep Jain**
Managing Director
- **Mr. Sahil Jain**
Director
- **Mr. M. Omprakash**
DGM – Commercial
Email: marketing@metalfabhightech.com
- **Mr. Ajit Kumar Ghosh**
GM – Quality
Email: quality@metalfabhightech.com

Tel. : 07104 -234240, 237998, 232566
07104-236713

Fax :



THANK YOU

mfhpl@hotmail.com